

BAUMAlight

brush mulchers

MF360 ▪ MF548 ▪ MF760 ▪ MF860

Baumalight brush mulchers effectively mulch large areas of brush and felled treetops without you lifting a twig



brush mulcher features

Baumlight brush mulcher features offer powerful performance, long-term dependability and, for the operator, ease-of-use.

① **Heavy-duty mulcher frames** are designed to handle rough use

② Mulchers offer **complete control** from **skid steer seat**

③ **Powerful mulching** on **low-flow hydraulics**
MF760 uses high-flow hydraulics up to 40GPM. MF860 is PTO-driven.

④ **Safety pusher bar** pushes trees and brush away from operator

⑤ **Flex couplers** provide hydraulic motor bearing protection

⑥ **Step point grip pads** ease entry and exit

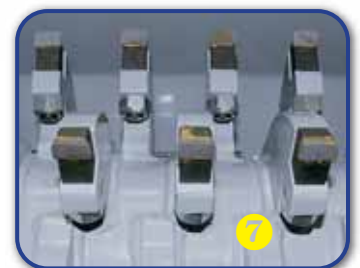
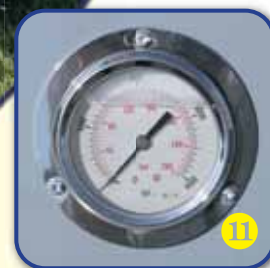
⑦ **Mulcher Teeth Facts**
The MF360 cuts with unique, reversible flail blades

- ▶ Mulchers bite deep with **knife-tipped, angled tooth design**.
- ▶ **High tooth population** ensures smooth cutting and minimal wear per tooth.
- ▶ **Spiraled, staggered teeth pattern** guarantees fine mulching.
- ▶ **Teeth are carbide-tipped** for longer tooth life and smoother operation.
- ▶ **Teeth replacement is 'as needed'**—one or two teeth at a time, never as a complete set. Only the tip requires replacement, reducing cost.

⑧ **Super-strength timer belt** cannot slip even in severe applications
MF360 uses heavy-duty gearbox

⑨ **Adjustable shoes** allow for your choice of two cutting heights

⑩ **Chain-link curtains** contain flying debris



⑪ MF548 and MF760 models ship with **pressure gauges** to monitor load. This allows the operator to travel at accelerated speeds in low-density brush.

models

Your choice of four mulcher models ensures the perfect fit for your specific needs.

MF360



2½" cutting height is ideal for close cutting.



Recommended for: cutting heavy grass and low brush. Features unique swing blade design that maximizes cutting performance. Blades are double-sided and can be reversed when dull.

MF548

Recommended for: high performance brush cutting on low-flow hydraulics. Take on brush with the flagship MF548 and discover how effective mulching on low-flow hydraulics can be.



MF760



Recommended for: high performance brush cutting on high-flow hydraulics of up to 40GPM. The MF760 is a perfect fit for the midsize or largest skid steers available.

MF860

The PTO-driven MF860 turns your tractor into a brush mulching machine, with the direct drive providing ultimate cutting power.



Specifications

	MF360	MF548	MF760	MF860
Motor Option available	A450, B550, C350	A450, B550	C350	n/a
Path Width	70"	62"	75"	
Rotor Width	60"	48"	60"	
Cutting Height from ground	2½"	0 to 1½"		0 to -1½"
Rotor RPM	800	1,200	1,750	1,800
Number of Cutters	2	104	126	
Slashes per Second	26	4,160	7,350	7,560
Hitch Type	skid steer			3-point
Hitch Size	universal			CAT II
Max HP	check flow and psi			70
Min HP	40	35	60	45
System Protection	built-in relief			slip clutch
Shipping Size (L x W x H)	36" x 80" x 90"	64" x 36" x 40"	80" x 48" x 65"	
Unit Weight (lb)	1,240	1,500	1,980	2,150

	A450	B550	C350		
Specifications for available motor options	Max PSI	3,000			*Warning: Motor will be destroyed if this value is exceeded.
	Max Flow (GPM)	20*	24*	40*	
	Recommended Flow (GPM)	12-20	12-24	22-40	
	Min Flow (GPM)	10	12	20	
	Hose Size	¾"		1"	
	Needs Case Drain	no	yes		

Maximum Recommended Brush Size for Mulcher Motors:

	A450 Motor					B550 Motor					C350 Motor				
Operation and Hydraulics	12GPM	15GPM	18GPM	20GPM	21GPM	12GPM	20GPM	22GPM	24GPM	25GPM	22GPM	24GPM	30GPM	40GPM	41GPM
Steady forward @ 2,500 psi	¾"	1"	1¼"	1½"	n/a*	¾"	1½"	2"	2¼"	n/a*	2"	2¼"	3"	3½"	n/a*
Steady forward @ 3,000 psi	1"	1¼"	1½"	2"	n/a*	1"	2"	2¼"	2½"	n/a*	2¼"	2½"	4"	4½"	n/a*

Double tree sizes for "stop and crawl" cutting. *Motor will be destroyed if this value is exceeded.

Maximum Recommended Brush Size for PTO-Driven MF860:

Operation and Gear Selection	45HP	50HP	60HP	70HP	71HP	Operation and Gear Selection	45HP	50HP	60HP	70HP	71HP
Steady Reverse in Low Gear	2"	2½"	3"	5"	n/a*	Steady Reverse in Creeper Gear	3"	4"	5"	6"	n/a*
Stop and Go in Low Gear	3"	4"	5"	6"	n/a*	Stop and Go in Creeper Gear	5"	6"	7"	8"	n/a*
						Steady Reverse with Hydrostatic	8"	10"	12"	14"	n/a*

Dec. 2008

Visit www.baumalight.com for more Baumalight products or dealer information.

Tree Spades | Trenchers | PTO Generators | Mulchers | Stump Grinders | Auger Drives

Baumalight sold by:

BAUMALight

Manufactured by MTB MFG Inc.
4575 Powell Road, Wallenstein, Ontario N0B 2S0
Toll-free: 1.866.820.7603 Fax: 519.698.1087
e-mail: sales@baumalight.com